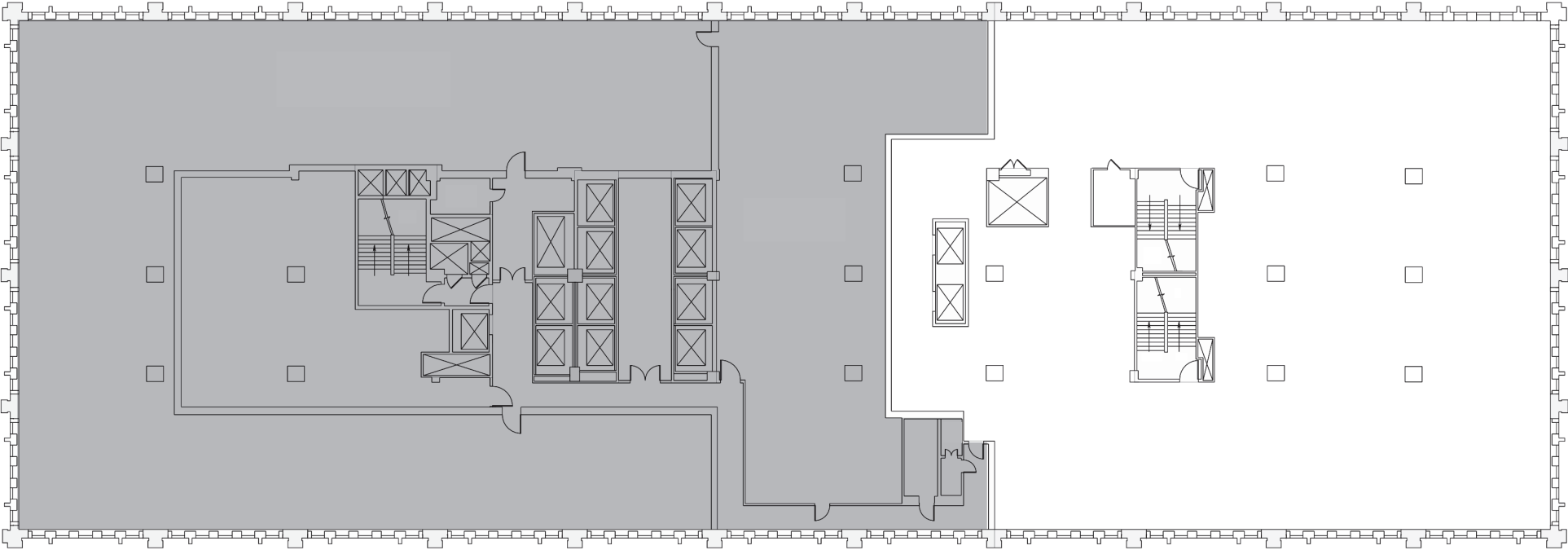
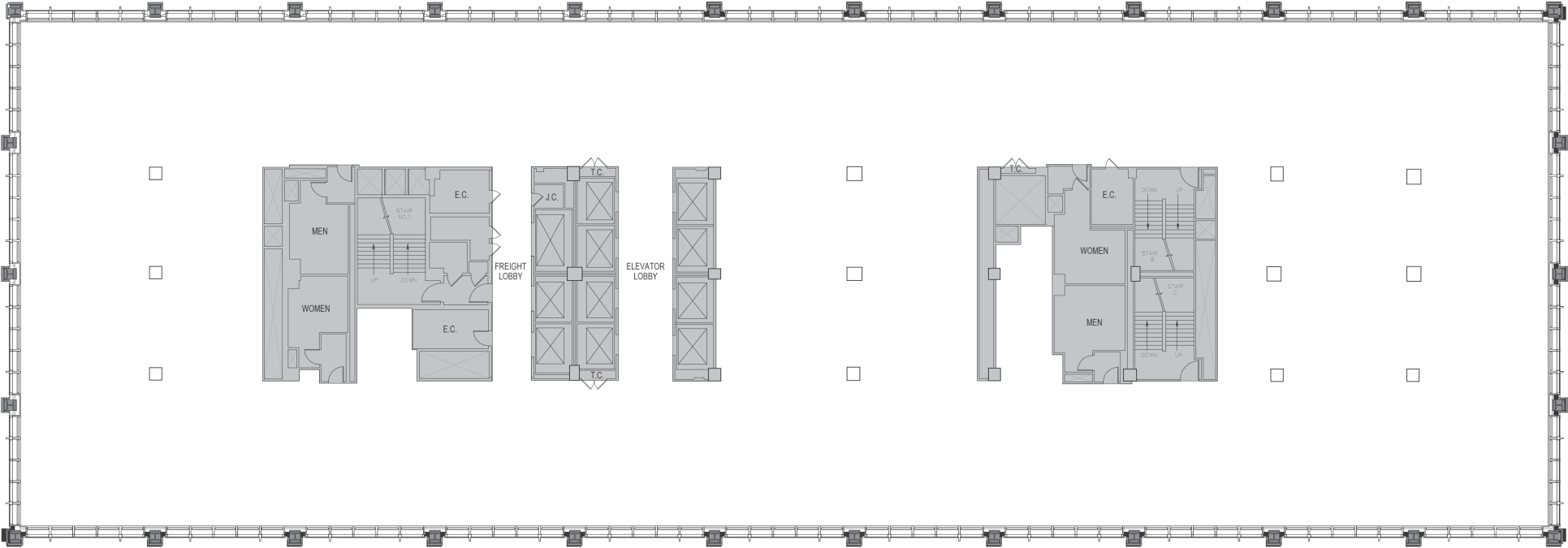


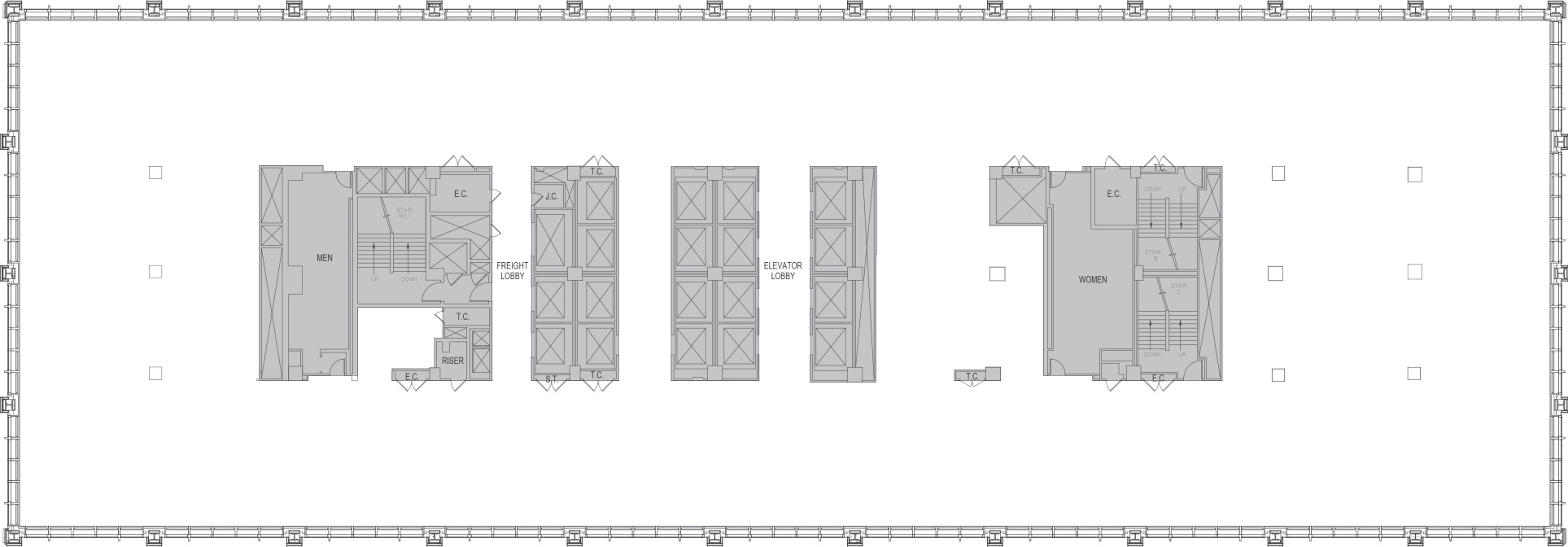
# CORE & SHELL PLAN | PENTHOUSE FLOORS 47-48 (PENTHOUSE ELEVATORS)



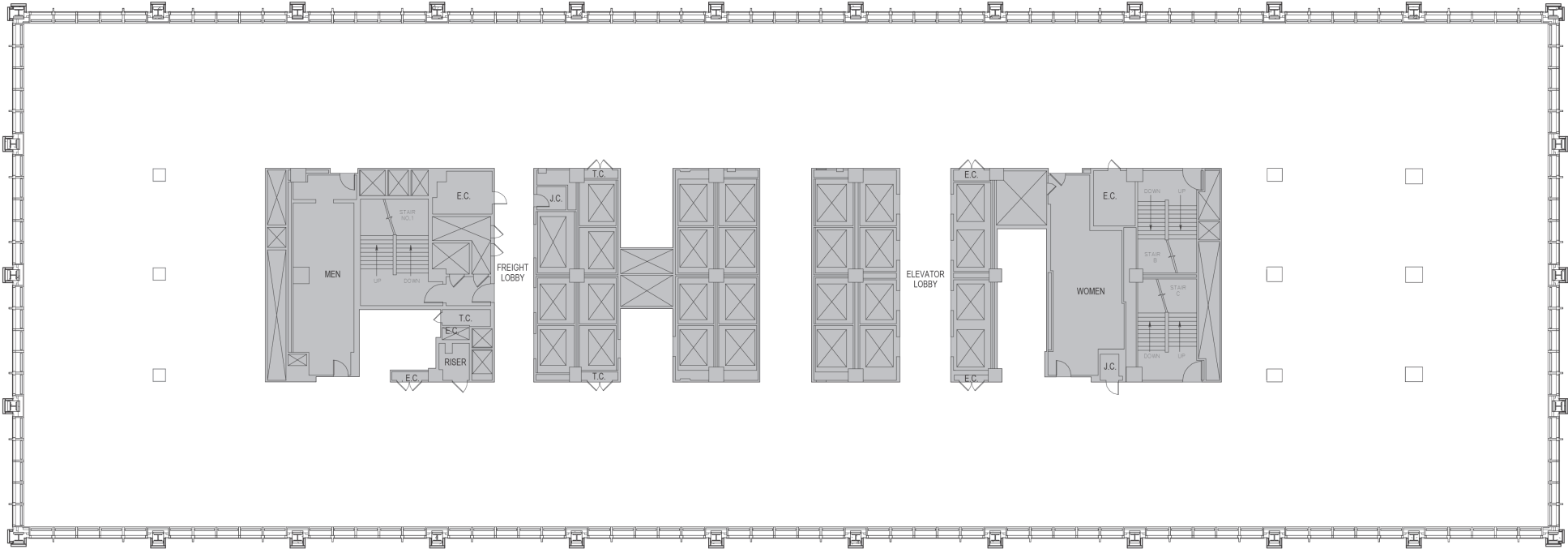
# CORE & SHELL PLAN | TOWER FLOORS 35-46 (A ELEVATORS)



# CORE & SHELL PLAN | TOWER FLOORS 23-34 (B ELEVATORS)



# CORE & SHELL PLAN | TOWER FLOORS 8-22 (C ELEVATORS)



# CORE & SHELL PLAN | PODIUM FLOORS 2-7 (D ELEVATORS)

